



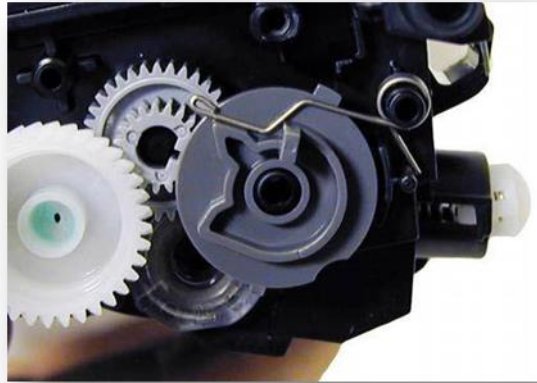
TonerProducts Nederland

Reset procedure voor uw Brother printer

Geachte klant,

Bij deze sturen wij u de reset procedure toe voor uw Brother printer.

Omdat er op deze toner cartridges van Brother geen chip zit, kan de printer niet elektronisch registreren dat er een nieuwe cartridge is geplaatst. Hiervoor zit in uw printer een mechanische methode wat dit doet. Hieronder ziet u hiervan een voorbeeld:



Deze afbeelding is ter illustratie en komt wellicht niet overeen met uw cartridge.

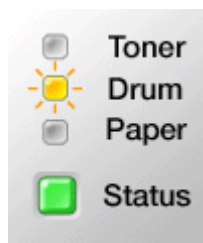
Wanneer dit mechanisme het veertje niet activeert, word de cartridge niet als “nieuw” herkend.

Dit kunt u handmatig op uw printer uitvoeren middels de volgende stappen:

The Drum LED is still on or flashing after I replace the drum unit with a new one.

Description:

The **Drum** LED as shown below will continue to be on or flash if the drum counter was not reset when you replace the drum unit with a new one.



Drum Near End

To clear these LED indications, you need to reset the drum counter [as instructed below](#).

If you want to clear an error LED related to the toner replacement, [click here to see how to clear the LED indications after you replaced the toner cartridge](#).



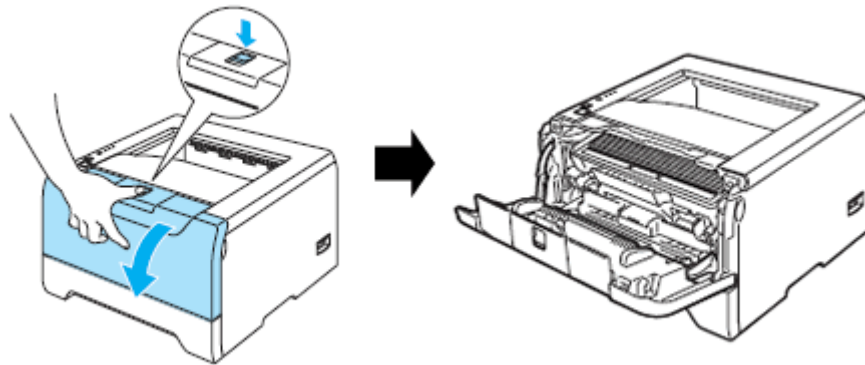
TonerProducts Nederland

Please follow the steps below to reset the drum counter.

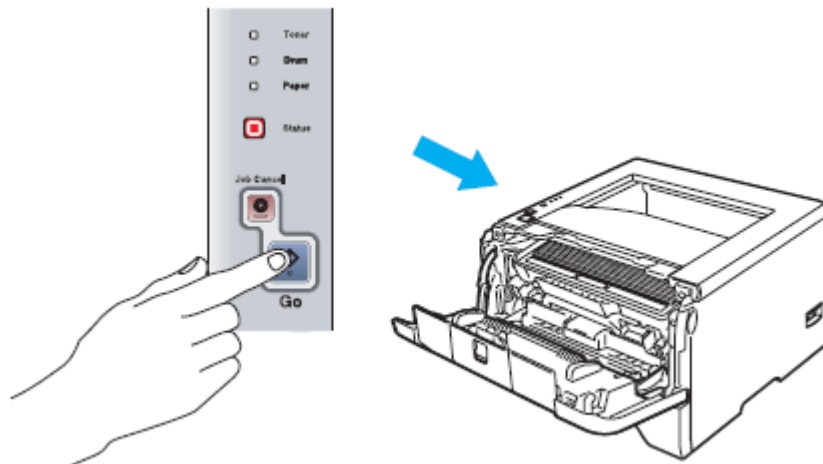
NOTE: Illustrations shown below are from a representative product and may differ from your Brother machine.

The Brother machine has separate consumables the toner cartridge and the drum unit. Verify you replace only the drum unit and not the toner cartridge. If you want to know their difference, refer to ["What is the difference between the toner cartridge and the drum unit?"](#)

1. Make sure that the machine is turned on.
2. Open the front cover.



3. To reset the drum counter, press and hold down **Go** for about 4 seconds until all the LEDs light up. Once all four LEDs are lit, release **Go**.



4. Close the front cover.
5. Make sure that the **Drum** LED is now off.